

Stress plate JBS-R/EcoTek (loose, pre-turned)



Application range

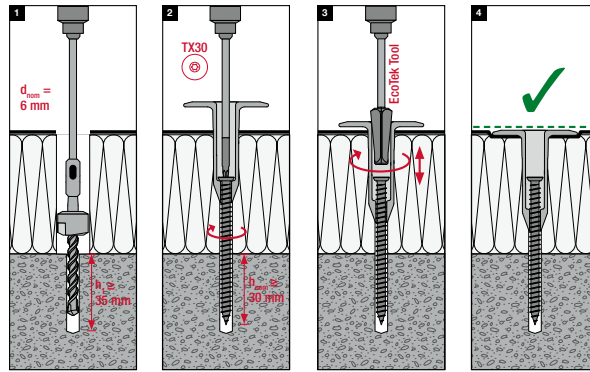
- > Adjustable fastening element
- > Ideal for slope insulation up to 590 mm
- > To fix roofing membranes with insulation to concrete sub-structures
- > For new buildings

Properties

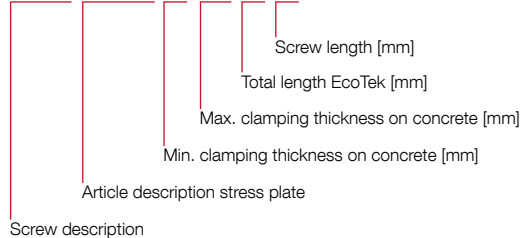
- > Screw: Case-hardened steel, Climadur-coated – high-quality coating to improve corrosion protection (15 Kesternich cycles, DIN 50018, 1997)
- > Stress plate: high-grade plastic material
- > Drive stress plate: complete EcoTek Tool
- > High thread for resistance to imposed loads

Cross references

- Bit hexalobular TX30
- Bit extension
- Hammer drill SDS plus
- A cone with flange
- Drill bit extension
- Complete EcoTek Tool
- Hip belt flat roof
- Starter set JBS-R 100/EcoTek



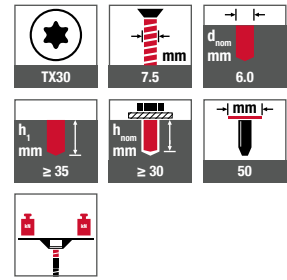
JBS-R/EcoTek-70-100-65/80



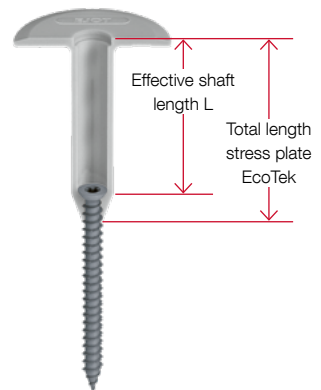
Applications



Technical specifications



Certifications



Product online



Order description	Total panel thickness [mm]	Effective Shaft length L [mm]	Screw length [mm]	PU [pieces]	Price/100 [EUR]	Article number	EAN
JBS-R/EcoTek-70-100-65/80	70-100	55	80	100		2706500820	4061245021409
JBS-R/EcoTek-90-120-85/80	90-120	75	80	100		2708500820	4061245021416
JBS-R/EcoTek-110-180-105/120	110-180	95	120	100		2710501220	4061245075464
JBS-R/EcoTek-170-270-165/150	170-270	155	150	100		2716501520	4061245021430
JBS-R/EcoTek-230-390-225/210	230-390	215	210	100		2722502120	4061245021447
JBS-R/EcoTek-340-500-335/210	340-500	325	210	100		2733502120	4061245021454
JBS-R/EcoTek-340-590-335/300	340-590	335	300	100		2733503020	4061245062709